

# D4 LED POST TOP RETROFIT-GEN II

Cost Savings • Easy to Install • Performance to Lighting Standards • Environmentally Friendly

## DESCRIPTION

The proven D4 LED Post Top Retrofit kit is a universal low cost replacement for high cost HID light sources in decorative fixtures. The D4 is designed as an easy yet reliable way to convert existing fixtures to meet lighting standards required in most environments, and for environmentally conscientious users wishing to eliminate mercury, reduce carbon footprint, and light pollution. This system has been thoroughly tested to the most demanding industry standards including LM-79, LM-80, In-Situ, TM-21, surge testing to UL 1449 3rd edition and more.

## KEY BENEFITS



- Quick and easy retrofit
- True white light, large coverage area
- Reduces energy consumption by up to 80%
- Reduces labor costs by up to 75%
- Mercury free and lead free (RoHS compliant)
- Easy to install and service
- Available in 30w, 40w, 60w, 65HO, and 80w versions up to 9100 lumens
- Available in 2200K, 3000K, 4000K or 5000K, Type 3, or Type 5 Distributions
- Up to 30' mounting height
- Designed to UL 1598 and UL 1449 3rd Edition
- All components are IP66 rated
- Available in standard, dimming, programmable, and more
- 5 year warranty (extended warranty available)



## SPECIFICATIONS

### Rated Life

100,000+ Hrs Rated System Life  
90% Lumen Maintenance at 100,000 Hrs

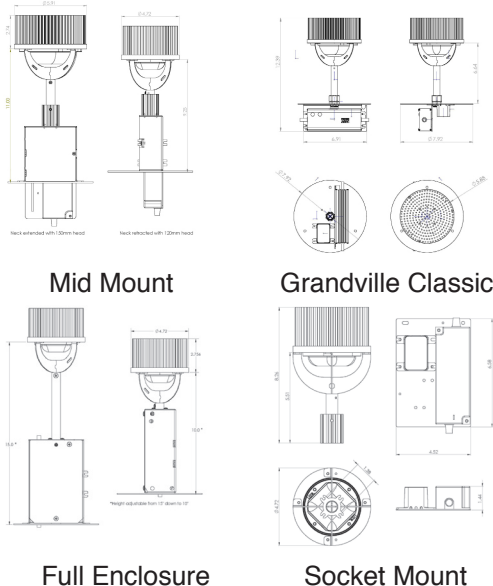
### Testing

IESNA LM-79  
IESNA LM-80  
InSitu Thermal  
Energy Star TM-21  
Surge & Transient Tested  
100% Production Test and Inspect

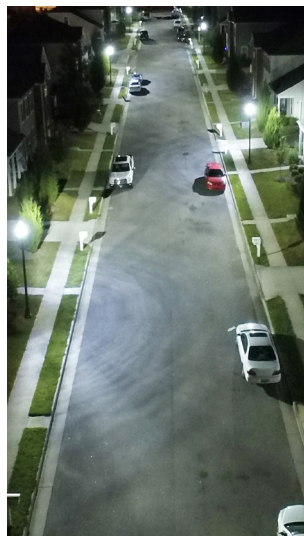
### Listing

IP66 Rated Components  
Designed to UL1449 3rd Edition I UL1598  
UL Drivers  
Complies with IEEE C62.41  
FCC Part 15 Class A  
Listed to UL1598C

## APPLICATION



D4 Installation



### Electrical

30w .25A, 40w .32A, 60w .48A, 60w .54A, 80w .64A at 120 VAC  
36 kV Surge Suppression  
> 95% Power Factor Corrected  
< 20% Total Harmonic Distortion  
-40C to +40C Ambient Operating Temp  
Universal 120-277 VAC  
Thermal Overload Protected  
Electrical Short / Overload Protected

### Shipping Information

Ships from Michigan Mfg Plant  
Unit Weight= 5.8-7.7 lbs

US Facility Production  
US Engineering

Made in the USA



**MATECH**  
LIGHTING SYSTEMS

20 YEARS OF SOLID STATE EXCELLENCE

900 E. Main Street  
Middleville, MI 49333

# D4 LED POST TOP RETROFIT- GEN II

Cost Savings • Easy to Install • Performance to Lighting Standards • Environmentally Friendly

## LUMINOUS FLUX AT 25C

D4 Model	Input Watts	2200K	3000K	4000K	5000K	CRI
30W	30	3,372	3,853	4,095	4,095	>70
40W	38	4,196	4,675	4,969	4,969	>70
60W	57	6,387	6,464	6,870	6,870	>70
65HO	65	N/A	7,883	8,318	8,318	>70
80W	77	8,017	8,050	8,556	8,556	>70

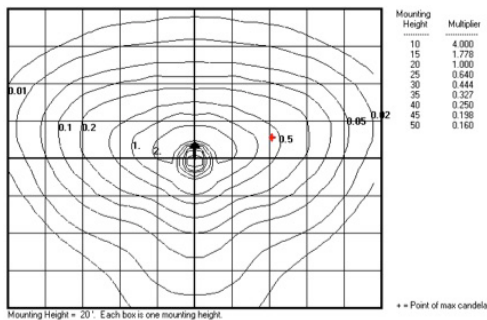
## COMMON RETROFIT APPLICATIONS

### Traditional Post Top Luminaires

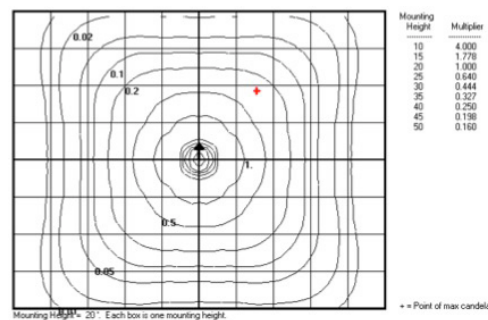
- Acuity ®
- ALP – Lexalite ®
- American Electric Lighting (AEL) ®
- Beacon ®
- Cooper ®
- Crown Plastics ®
- Formed Plastics ®
- GE ®
- Hadco ®
- Holophane ®
- InterGlobal ®
- King Luminaire ®
- Lumec ®
- Mainstreet Lighting ®
- Pelco ®
- Penn Globe ®
- Philips ®
- Spring City ®
- Sternberg ®



## PHOTOMETRIC PLOTS



**D4 80w Type 3 at 20ft Mounting**



**D4 80w Type 5 at 20ft Mounting**



Made in the USA



**MATECH**  
LIGHTING SYSTEMS

20 YEARS OF SOLID STATE EXCELLENCE



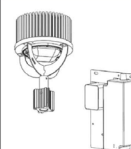

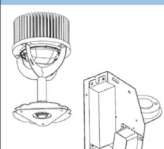
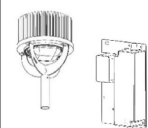
900 E. Main Street  
Middleville, MI 49333

# D4 LED POST TOP RETROFIT- GEN II

Cost Savings • Easy to Install • Performance to Lighting Standards • Environmentally Friendly

## D4 PRODUCT MATRIX

P/N Format: **D4 - (style)(watts) - (cct)K - T(type)M - (mounting) - (dimming)**  
 Example: **D4 - F60 - 30K - T5M - 6S - STD**

Full Enclosure Kit	Style	Watts	-	CCT	-	Type	-	Mounting	-	Dimming	Mounting Code Details
	D4-F	30	-	22K	-	T5M	-	625	-	STD	Universal 6.25" plate
	D4-F	40	-	30K	-	T3M	-	6S	-	DIM	Universal 6.5" plate
	D4-F	60	-	40K	-		-	7S	-	PXYZ#	Universal 7" plate
	D4-F	80	-	50K	-		-	8N	-	DALI	Universal 8" plate
									C###		
<i>Typical Application: Generic shallow fitter where ballast was mounted under cover above fitter</i>											
Mid Mount Kit	Style	Watts	-	CCT	-	Type	-	Mounting	-	Dimming	Mounting Code Details
	D4-M	30	-	22K	-	T5M	-	CHBTL	-	STD	Hadco B Twistlock
	D4-M	40	-	30K	-	T3M	-	CHBSP	-	DIM	Hadco B Pin & Screw
	D4-M	60	-	40K	-		-	CSBSC	-	PXYZ#	Sternburg Spring Clips
	D4-M	80	-	50K	-		-	CSBTL	-	DALI	Sternburg Twistlock
									C###		
								#XX			Universal Plates above also applicable
<i>Typical Application: Deeper fitters such as petal style where ballast was mounted into fitter by top plate/cover.</i>											
Socket Replacement Kit	Style	Watts	-	CCT	-	Type	-	Mounting	-	Dimming	Mounting Code Details
	D4-S	30	-	22K	-	T5M	-	CSCKT	-	STD	Mogel Socket Replacement Extrusion
	D4-S	40	-	30K	-	T3M	-	CSDO1	-	DIM	Metal Standoff 1" High holds Extrusion
	D4-S	60	-	40K	-		-	C###	-	PXYZ#	Other custom configurations
	D4-S	80	-	50K	-		-		-	DALI	
<i>Typical Application: Cast top cover fitters where socket must be replaced. Power supply mounts below that casting.</i>											
Granville Classic Kit	Style	Watts	-	CCT	-	Type	-	Mounting	-	Dimming	Mounting Code Details
	D4-H	30	-	22K	-	T5M	-	CGVC7	-	STD	Granville Classic 7" Fitter or 4" Fitter
	D4-H	40	-	30K	-	(T3M - NA)	-	HGVC7	-	DIM	"H" prefix is high output version
	D4-H	60	-	40K	-		-		-	PXYZ#	
		(80 NA)	-	50K	-		-		-	DALI	
<i>Typical Application: Specific configuration for mounting in Granville Classic 7" and 4" fitters with 19" glass globes. One piece assembly</i>											
Granville Premier Kit	Style	Watts	-	CCT	-	Type	-	Mounting	-	Dimming	Mounting Code Details
	D4-H	30	-	22K	-	T5M	-	CGPCS	-	STD	Granville Premier w/ Photo Control Socket
	D4-H	40	-	30K	-	(T3M - NA)	-	CGPNS	-	DIM	Granville Premier w/o Photo Control Socket
	D4-H	60	-	40K	-		-		-	PXYZ#	
		(80 NA)	-	50K	-		-		-	DALI	
<i>Typical Application: Specific configuration for mounting in Granville Premier fitters with 19" glass globes. Two piece assembly.</i>											
OEM Components Kit	Style	Watts	-	CCT	-	Type	-	Mounting	-	Dimming	Mounting Code Details
	D4-C	30	-	22K	-	T5M	-	COEM1	-	STD	OEM Customer, configuration 1
	D4-C	40	-	30K	-	T3M	-	CCC01	-	DIM	OEM Customer CC, configuration 1
	D4-C	60	-	40K	-		-	CCC02	-	PXYZ#	OEM Customer CC, configuration 2
	D4-C	80	-	50K	-		-	C###	-	DALI	Other custom configurations
<i>Typical Application: LED Light Engine and Power supply only. OEM provides light engine mount. 3/10/17</i>											

## ORDERING INSTRUCTIONS

Product Family	Mount Style (blank)	Wattage	Color Temp (CCT)	Distribution Type	Fixture Designator	STD/Dimming
----------------	---------------------	---------	------------------	-------------------	--------------------	-------------

Ordering Instructions:

**D4 - M 60 - 40K - T5M - CAEC1 - STD**

Resulting P/N: **D4 - M60 - 40K - T5M - CAEC1 - STD**

Description: D4, Mid Mount, 60 watt, 4000K CCT, Type 5 medium distribution, AEL Contempo version, Standard driver

Made in the USA



**MATECH**  
LIGHTING SYSTEMS

20 YEARS OF SOLID STATE EXCELLENCE

900 E. Main Street  
Middleville, MI 49333

