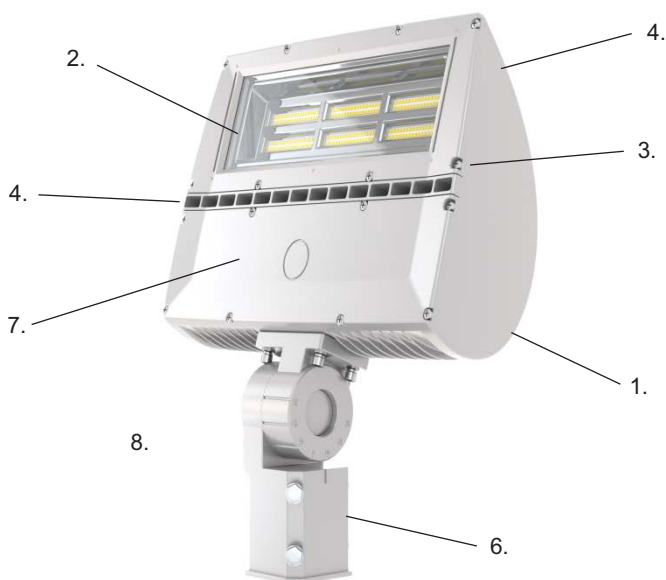


APPLICATION

The LF2 LED Floodlight luminaire comes complete and ready for installation in architectural lighting, directional area lighting, and signage lighting applications. It comes available in 2 different wattages and features many benefits including universal voltage LED drivers, extreme 40 kV 20 kA surge protection, a die cast housing, and a five year warranty. The LF2 luminaire gives the customer a very efficient, low maintenance light source and allows the customer to precisely aim and illuminate an area of need.

SPECIFICATION FEATURES

1. Corrosion resistant, rugged die-cast aluminum housing with baked powder coat paint finish.
2. Compact frame to fix lens with water proof rubber gasket inside to ensure IP65 grade.
3. Stainless steel corrosion resistant screws.
4. Compact design housing isolates LED module from driver to reduce heat exposure.
5. "Flow through ventilation" between LED and driver compartments.
6. Multiple "field replaceable" accessories available.
7. IP67 driver and ROHS compliant.
8. Ambient operating temperature of -40C to 40C.
9. ETL and Premium DLC listed.



LF2 FLOODLIGHT LUMINAIRE

100W LED
120W LED
150W LED
200W LED

EPA

Effective Projected Area:
1.71 Square Feet

Approximate Net Wt.:

100W = 17 lbs.
120W = 17.5 lbs.
150W = 19 lbs.
200W = 19.5 lbs.

DesignLights Consortium™

Get rebates with DLC qualified products.



Luminous Intensity Distribution Plots

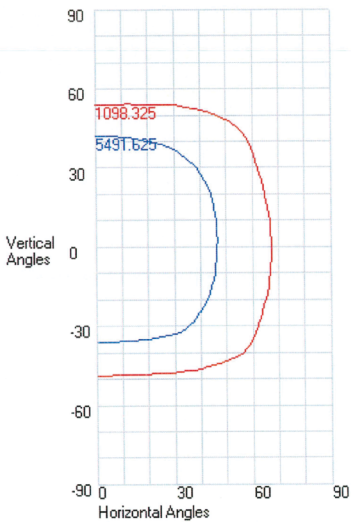
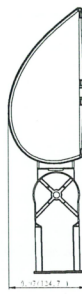


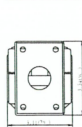
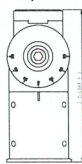
Chart 2: Illuminance Plot (Footcandles)

Chart 3: Isocandela Plot

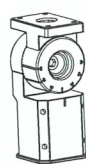
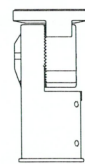
ACCESSORIES



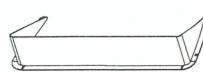
CFL2L



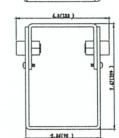
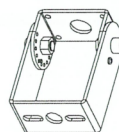
Top Visor Mount



Bottom Visor Mount



Yoke



Wire Guard



ORDERING INFORMATION

SAMPLE NUMBER: LF2150LE2774K2GY3PLLPC

[illegible]